

Microwave Motion Sensor (Uni-directional) HR50-Uni

Instruction Manual HOTRON LTD.

CE 2150

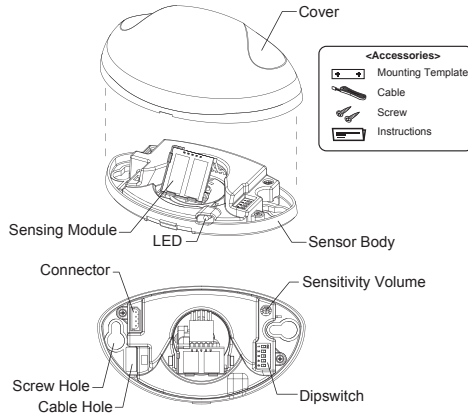
The HR50-UNI is a high performance motion detection sensor specifically designed for the activation of automatic doors.
For the safe and accurate use of this product, please read this instruction manual carefully.



1 Technical Specifications

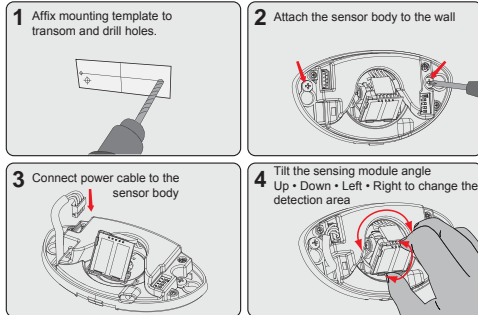
Power supply : DC 12~30V, AC 12~24V
 Product Size : 120mm x 70mm x 41.5mm(W x L x H)
 Microwave module : 24.125GHz
 Hold time : 1.2 Sec.
 Detecting field: 5m x 3m (W x D) (Height 2.2m)
 Current consumption : < 1.4W
 Contact capacity : 1A/24VDC
 Max install height : 4.0m
 Operating Temp/Humidity : -20°C~60°C(0~90%)
 International Protection : IP54

2 General Information

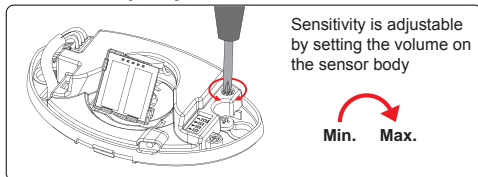


3 Installation Guide

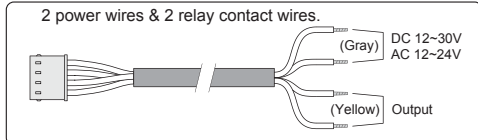
⚠ Do not supply power during installation.
Do not disassemble or modify the device, it may cause fire or electric shock



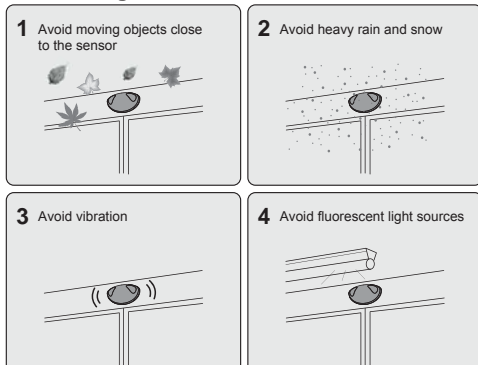
4 Sensitivity Adjustment



5 Wiring Diagram



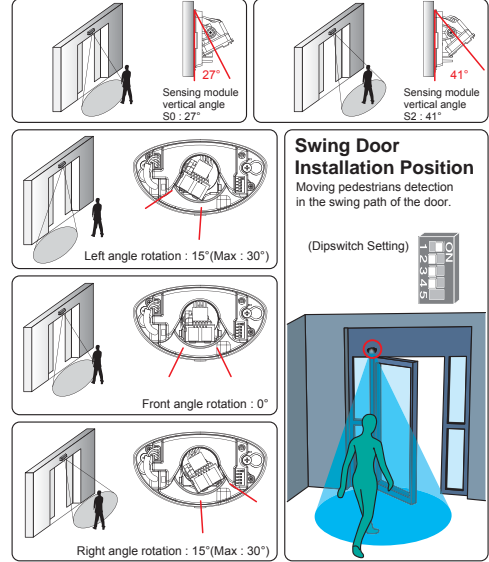
6 Mounting Information



NOTE The specifications of this product can be changed without prior notice

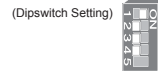
7 Detection Area Position Adjustment

Adjust the Sensing module up and down to achieve a detection area close to or far from the door.
Adjust the Sensing module to the right and left to achieve the desired side approach detection area.

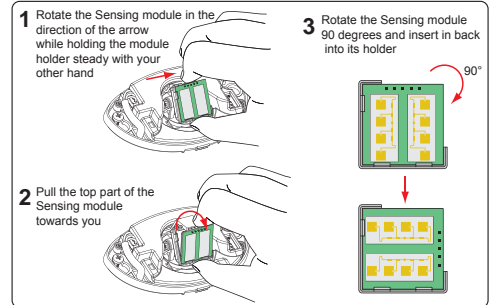


Swing Door Installation Position

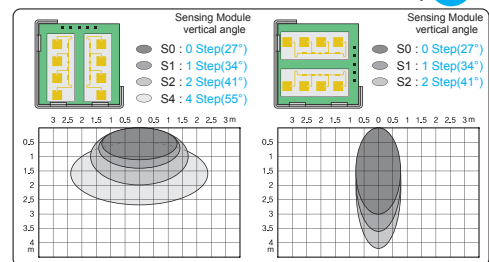
Moving pedestrians detection in the swing path of the door.



8 Wide or Narrow Detection Area Adjustment



9 Detection Field (Mounting Height : 2.2m)



10 Dipswitch Setting (Default Dipswitch Setting NO. : 2)

| NO. | Dip Switch | Direction | Turtle Mode | NO. | Dip Switch | Direction | Turtle Mode |
|-----|------------|-----------|-------------|-----|------------|-----------|-------------|
| 1 | ON | Left | None | 5 | ON | Right | None |
| 2 | ON | Left | High | 6 | ON | Right | High |
| 3 | ON | Left | Medium | 7 | ON | Right | Medium |
| 4 | ON | Left | Low | 8 | ON | Right | Low |
| 9 | ON | Left | None | | | | |
| 10 | ON | Left | High | | | | |
| 11 | ON | Left | Medium | | | | |

Turtle mode (slow speed detecting mode) Relay holding time 1 unit is 1 second

11 Weather Cover (sold separately)

